

[OPTIMUS PRO]

STADIUM FLOODLIGHT


7
 YEAR
 PRODUCT
 WARRANTY

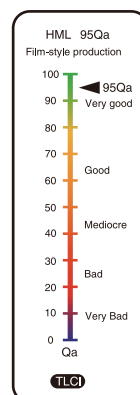
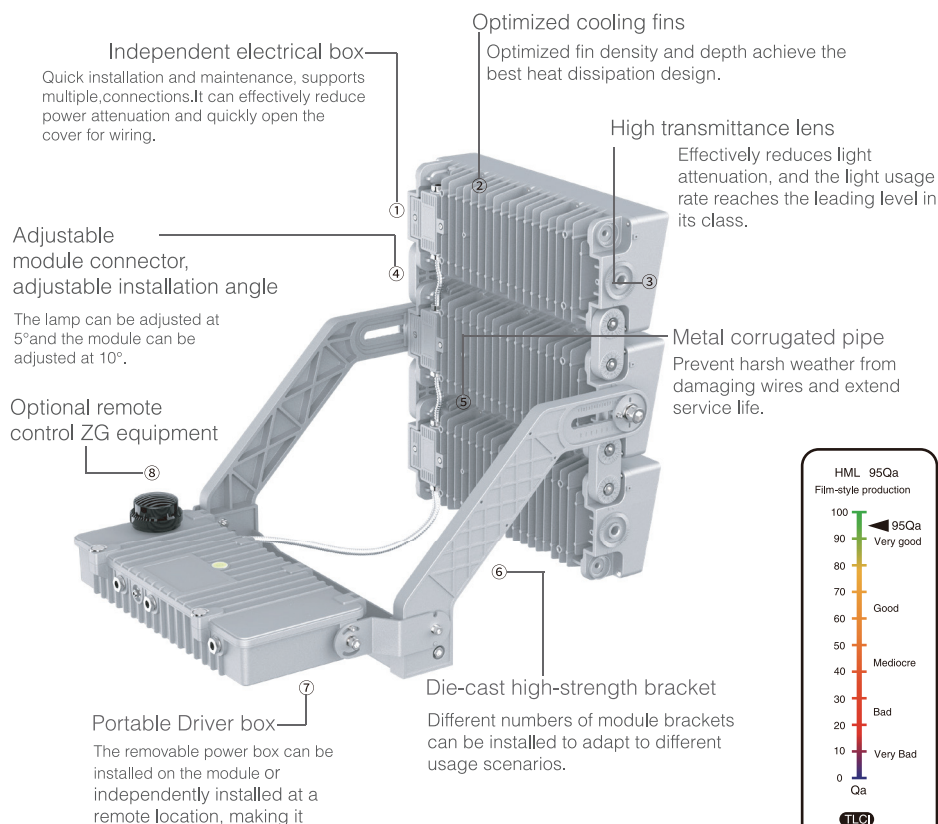
TLCI
95
IP
66
 INGRESS
 PROTECTION

IK
08
 IMPACT
 PROTECTION

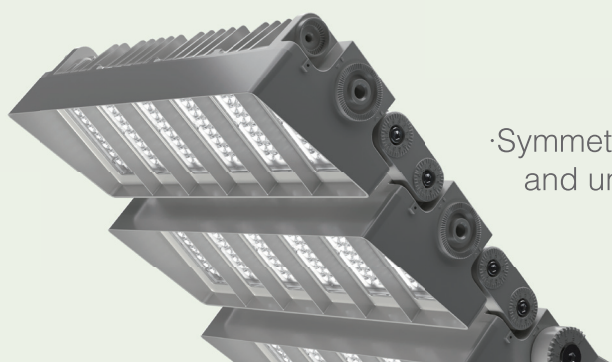
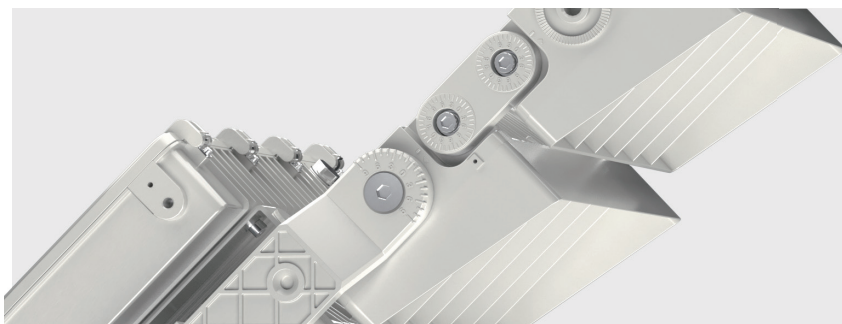
Description

The Optimus Pro high pole modular lighting series is a new type of sports lighting solution that can provide excellent lighting quality and support movie level TLCI lighting broadcasting standards for sports venues, reaching the Qa95 level. Optimus Pro is designed specifically for sports venues and multi-purpose venues. To ensure optimal use in multiple occasions, this series includes two versions of lens lighting; This version can also be used in conjunction with external electrical boxes, which can be used independently in a distance from the lamp body; It can also be pre installed on the lamp body. In addition, flexible adjustment of angles between modules can be achieved to achieve the optimal lighting range.

Key Features

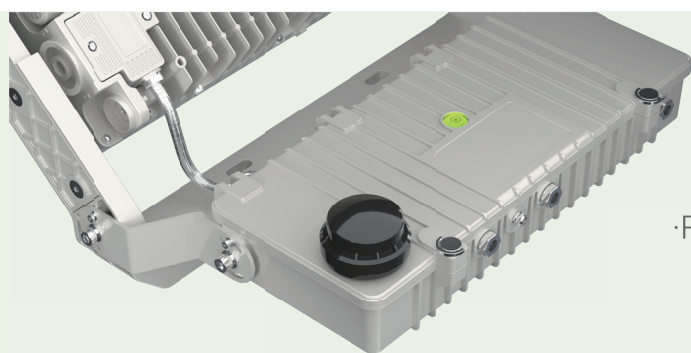
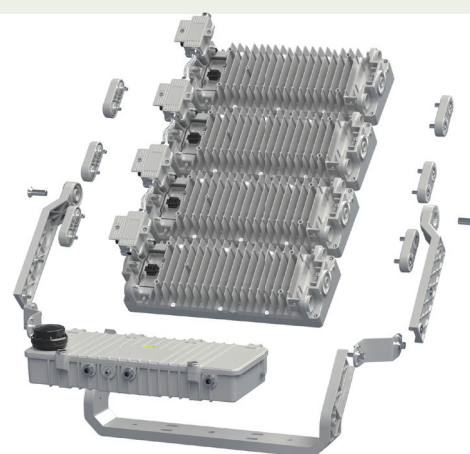


- The highly flexible design makes it suitable for different styles of venues, providing high-quality lighting while complying with lighting standards for event broadcasts
- The superior thermal management system and IP66 rating maximize its service life and reduce maintenance costs in both new build and retrofit installations.
- Multiple modules can be used in combination, and the angle of each module can be adjusted to adapt to different lighting ranges.
- A wide range of symmetrical/asymmetrical optical lenses ensure low glare and excellent lighting uniformity, making it exceed the requirements of various sports venue lighting level standards;
- Wide ambient temperature tolerance range, making it suitable for use in a variety of sports field applications and outdoor lighting applications;
- Integrated die-cast housing, IP66 dustproof and waterproof.



·Symmetric and asymmetric optical available to ensure low glaring and uniformity of lights.

·Fast installation and independent module design with adjustable angle for different application and range.



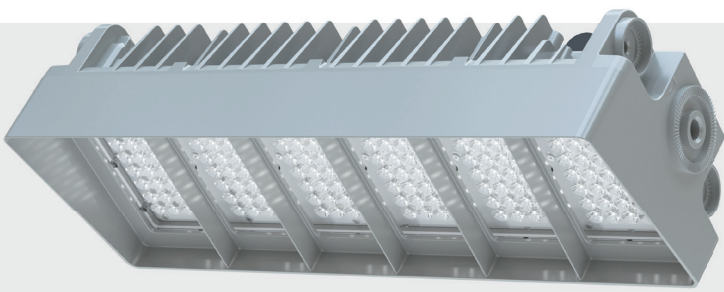
·Portable Driver box, with Zhaga supported adaptor.

Technical Specifications

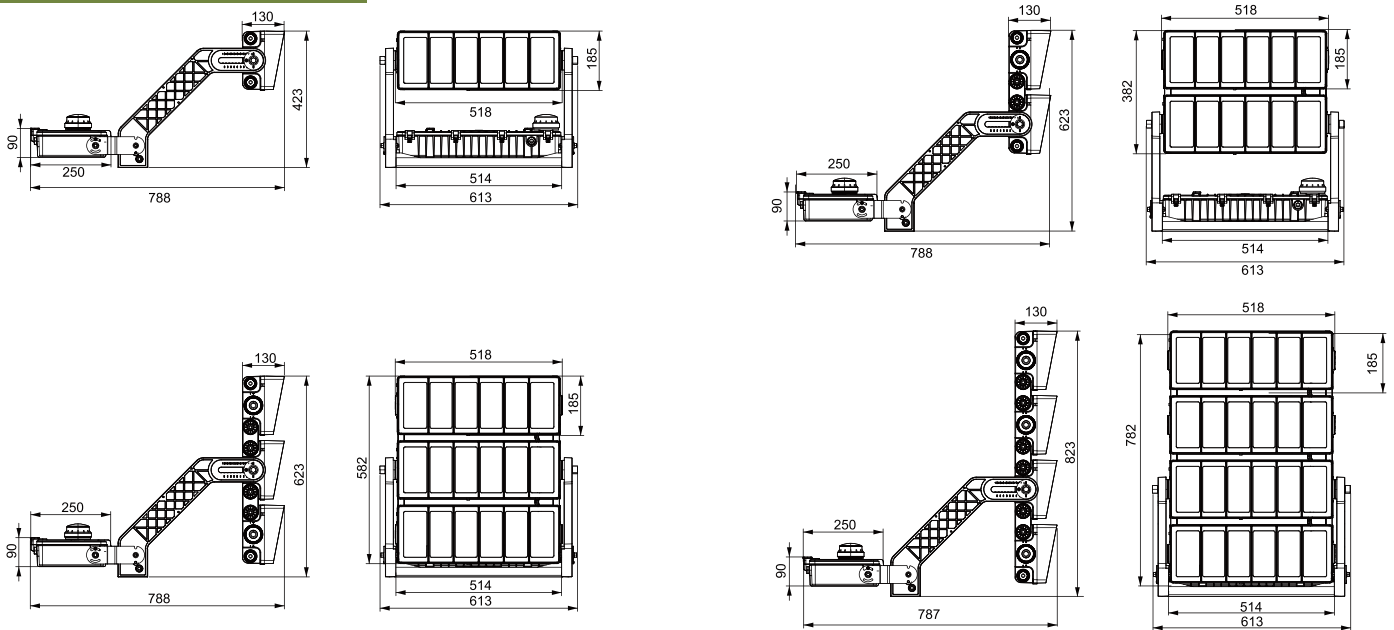
Input Volt	AC100-305V 47-63Hz
Power Factor	>0.95
Surge Protection	L/N-g>10KV & L-N>6KV
THD	<10%
Lifespan	100,000 Hours
Housing Materials	Die-cast Aluminum + PC LENS
Driver Box	Fixed on Install Bracket or Separated from it

Driver	INVENTRONIC/SOSEN/MEANWELL
Beam Angle	10°/15°/30°/50°/P45/P60
CRI	70/80/90
Lumen Efficiency	110-170lm/w
Working Temperature	-30°C ~ +40°C
Housing Colour	Black/Silver Colour
Chip	CSP2121

TECHNICAL DATASHEET



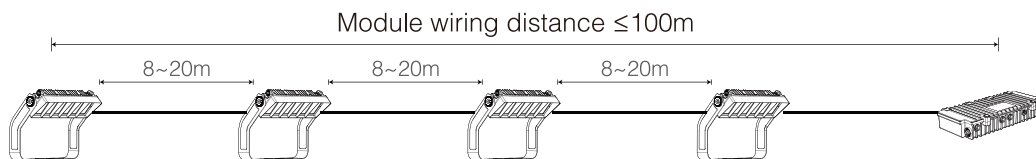
Dimensional Drawing



Specification

Model	Power	CCT	Chip's Qty	L	H	W	Net Weight
POP-400W	400W	2700-6500K	192PCS	518	185	130	19.3kg
POP-800W	800W	2700-6500K	384PCS	518	385	130	26.5kg
POP-1200W	1200W	2700-6500K	576PCS	518	585	130	33.1kg
POP-1600W	1600W	2700-6500K	768PCS	518	785	130	39.7kg

Module wired connection



Opticals

